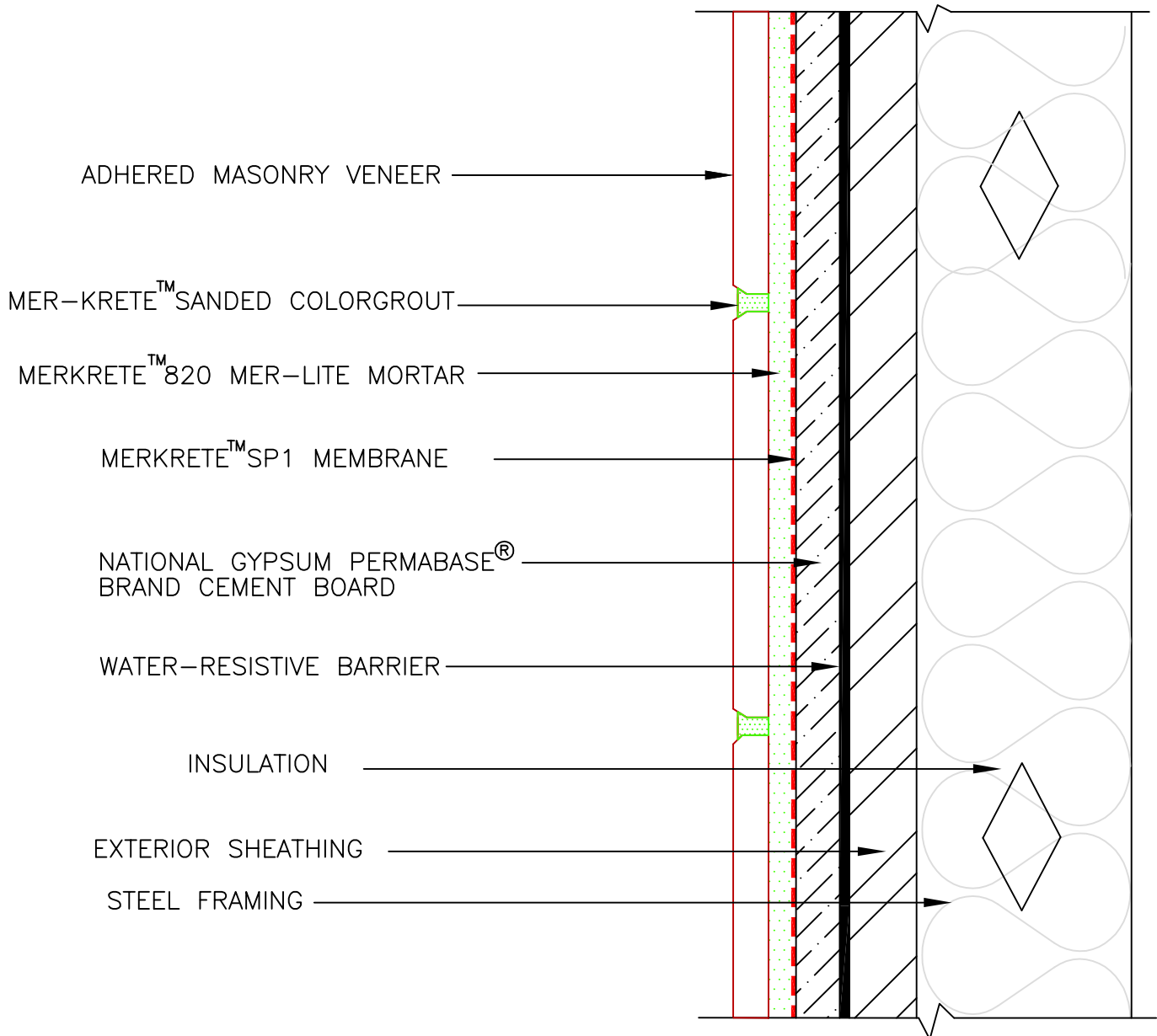


ADHERED MASONRY VENEER OVER PERMABASE® BRAND CEMENT BRAND - STEEL FRAMED WALL



REVISION DATE 12-7-09 SCALE: NTS

NOTE: The need for a vapor retarder, insulation type and location needs to be determined by the designer.

Disclaimer: The design specifications and construction of the wall shall comply with all local building codes and standards. Parex USA installation guidelines are for general information and guidance only and Parex USA specifically disclaims any liability for the use of this design, and for design engineering, or workmanship of any project. The wall assembly shall be designed to prevent condensation within the assembly. The designer and the user shall provide final drawings and specifications.